



Frontier Electronics Corp.

667 E. COCHRAN STREET, SIMI VALLEY, CA 93065

TEL: (805) 522-9998 FAX: (805) 522-9989

E-mail: frontiersales@frontierusa.com

Web: <http://www.frontierusa.com>

15A HIGH CURRENT SILICON BRIDGE RECTIFIERS

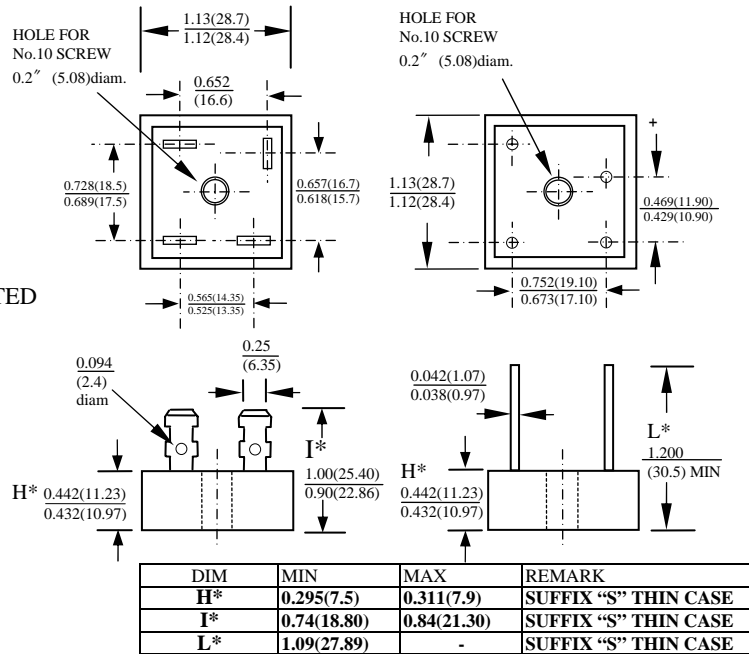
BP15-005G THRU BP15-10G

FEATURES

- CURRENT RATING 15A
- REVERSE VOLTAGE RATING UP TO 1000V
- TYPICAL IR LESS THAN 1 μ A
- HIGH TEMPERATURE SOLDERING GUARANTEED:
260°C /10 SECOND
- GLASS PASSIVATED CHIP JUNCTION

MECHANICAL DATA

- CASE: METAL HEAT SINK CASE, ELECTRICALLY INSULATED
- TERMINALS: UNIVERSAL .25" (6.3 mm) FAST ON DIMENSIONS IN INCHES AND (MILLIMETERS)
- MOUNTING METHOD: BOLT DOWN ON HEAT SINK WITH SILICON THERMAL COMPOUND BETWEEN BRIDGE AND MOUNTING SURFACE FOR MAXIMUM HEAT TRANSFER EFFICIENCY
- WEIGHT: 20 GRAMS



MAXIMUM RATINGS AND ELECTRICAL CHARACTERISTICS RATINGS AT 25°C AMBIENT TEMPERATURES UNLESS OTHERWISE SPECIFIED
SINGLE PHASE, HALF WAVE, 60 HZ, RESISTIVE OR INDUCTIVE LOAD.FOR CAPACITIVE LOAD, DERATE CURRENT BY 20%.

RATINGS	SYMBOL	BP15 -005G	BP15 -01G	BP15 -02G	BP15 -04G	BP15 -06G	BP15 -08G	BP15 -10G	UNITS
MAXIMUM RECURRENT PEAK REVERSE VOLTAGE	V _{RRM}	50	100	200	400	600	800	1000	V
MAXIMUM RMS VOLTAGE	V _{RMS}	35	70	140	280	420	560	700	V
MAXIMUM DC BLOCKING VOLTAGE	V _{DC}	50	100	200	400	600	800	1000	V
MAXIMUM AVERAGE FORWARD RECTIFIED OUTPUT CURRENT AT TC=55°C	I _O	15.0							A
PEAK FORWARD SURGE CURRENT SINGLE SINE-WAVE SUPERIMPOSED ON RATED LOAD	I _{FSM}	300							A
STORAGE TEMPERATURE RANGE	T _{STG}	- 55 TO + 175							°C
OPERATING TEMPERATURE RANGE	T _{OP}	- 55 TO + 175							°C

ELECTRICAL CHARACTERISTICS (A_T T_A =25°C UNLESS OTHERWISE NOTED)

CHARACTERISTICS	SYMBOL	BP15 -005G	BP15 -01G	BP15 -02G	BP15 -04G	BP15 -06G	BP15 -08G	BP15 -10G	UNITS
MAXIMUM INSTANTANEOUS FORWARD VOLTAGE PER BRIDGE ELEMENT AT SPECIFIED CURRENT	V _F	1.1							V
MAXIMUM REVERSE DC CURRENT AT RATED DC BLOCKING VOLTAGE PER ELEMENT	I _R	10							μ A

NOTE: Suffix No. Versus Different Cases and Terminals

TERMINAL	CASE				
	SUFFIX No	NORMAL METAL CASE	THIN METAL CASE	NORMAL PLASTIC CASE ALUMINUM BASE	THIN PLASTIC CASE ALUMINUM BASE
FAST ON TERMINALS		NO SUFFIX	S	P	PS
WIRE LEAD TERMINALS		W	WS	PW	PWS
IN LINE PIN CONFIGURATION		-	-	L	LS

RATINGS AND CHARACTERISTIC CURVES BP15-005G THRU BP15-10G

FIG. 1 - MAXIMUM OUTPUT RECTIFIED CURRENT

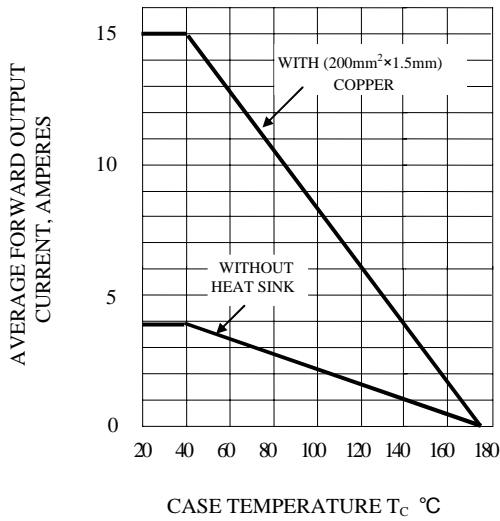


FIG. 4 - MAXIMUM NON-REPETITIVE PEAK FORWARD SURGE CURRENT

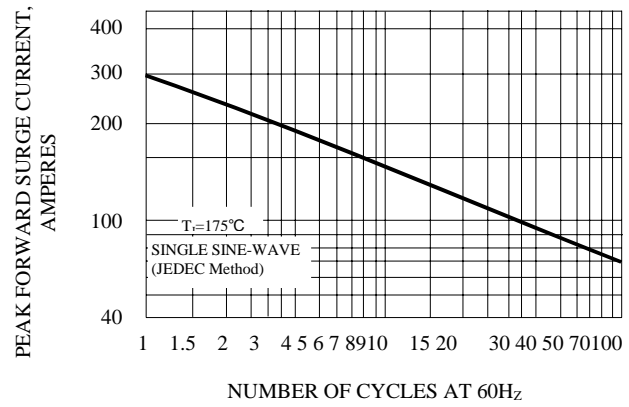


FIG. 2 - TYPICAL REVERSE CHARACTERISTICS AT T_j=25°C

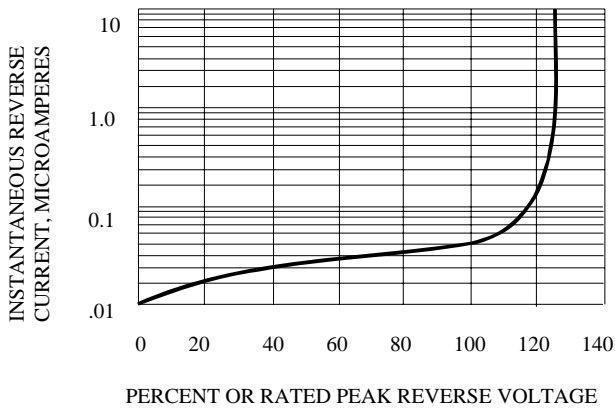


FIG. 5 - TYPICAL JUNCTION CAPACITANCE PER BRIDGE ELEMENT

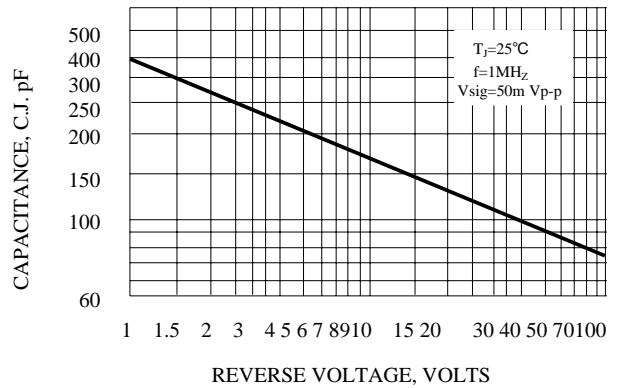


FIG. 3 - TYPICAL INSTANTANEOUS FORWARD CHARACTERISTICS

