



Frontier Electronics Corp.

667 E. COCHRAN STREET, SIMI VALLEY, CA 93065

TEL: (805) 522-9998 FAX: (805) 522-9989

E-mail: frontiersales@frontierusa.com

Web: frontierusa.com

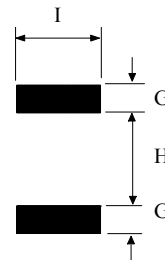
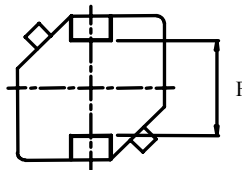
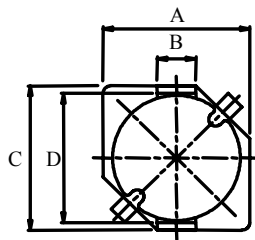
SMD Power Choke—CSN075F series

A. Electrical specification:

Part No.	Mark	L (uH)	Test Freq.	DCR max. (Ω)	I rms. (A)
CSN075F-1R0M	102	1.0	100 KHz	0.023	2.88
CSN075F-1R5M	152	1.5	100 KHz	0.028	2.56
CSN075F-2R2M	222	2.2	100 KHz	0.032	2.36
CSN075F-3R3M	332	3.3	100 KHz	0.038	2.16
CSN075F-4R7M	472	4.7	100 KHz	0.049	1.88
CSN075F-6R8M	682	6.8	100 KHz	0.060	1.68
CSN075F-100M	103	10	100 KHz	0.070	1.56
CSN075F-120M	123	12	100 KHz	0.080	1.44
CSN075F-150M	153	15	100 KHz	0.090	1.36
CSN075F-180M	183	18	100 KHz	0.100	1.28
CSN075F-220M	223	22	100 KHz	0.120	1.17
CSN075F-270M	273	27	100 KHz	0.140	1.07
CSN075F-330M	333	33	100 KHz	0.160	1.00
CSN075F-390M	393	39	100 KHz	0.190	0.91
CSN075F-470M	473	47	100 KHz	0.220	0.84
CSN075F-560M	563	56	100 KHz	0.290	0.72
CSN075F-680M	683	68	100 KHz	0.340	0.66
CSN075F-820M	823	82	100 KHz	0.460	0.58
CSN075F-101M	104	100	100 KHz	0.550	0.51
CSN075F-121K	124	120	100 KHz	0.670	0.42
CSN075F-151K	154	150	100 KHz	0.900	0.37
CSN075F-181K	184	180	100 KHz	1.050	0.35
CSN075F-221K	224	220	100 KHz	1.350	0.29
CSN075F-271K	274	270.0	100 KHz	1.550	0.28
CSN075F-331K	334	330.0	100 KHz	2.050	0.23
CSN075F-391K	394	390.0	100 KHz	2.300	0.215
CSN075F-471K	474	470.0	100 KHz	2.600	0.195

B. Mechanical dimensions: (Unit: mm)

SERIES #	A (MAX.)	B	C (MAX.)	D	E (MAX.)	F	G	H	I
CSN075F	7.6	2.0	7.6	Σ 6.8	5.1	5.4	2.0	4.4	3.0



Type 1: Unshielded

Land Pattern

C. Features:

- Tolerance: M: ±20%, L: ± 15%, K: ± 10%.
- Operating temperature: -25°C TO +85°C.
- Inductance measured on the HP4284A LCR meter.
- DCR measured on the 502BC milli-ohm meter.
- Inductance drops no more than 10% at rated current applied or temperature rises $\Delta t < 40^\circ\text{C}$.
- Inductance range: CSN075F-series: From 1.0uH(2.88A) to 470uH(0.195A).

Note: **RoHS** compliant; for the **ROHS** parts, we add “-LFR” at the end of the P/N.



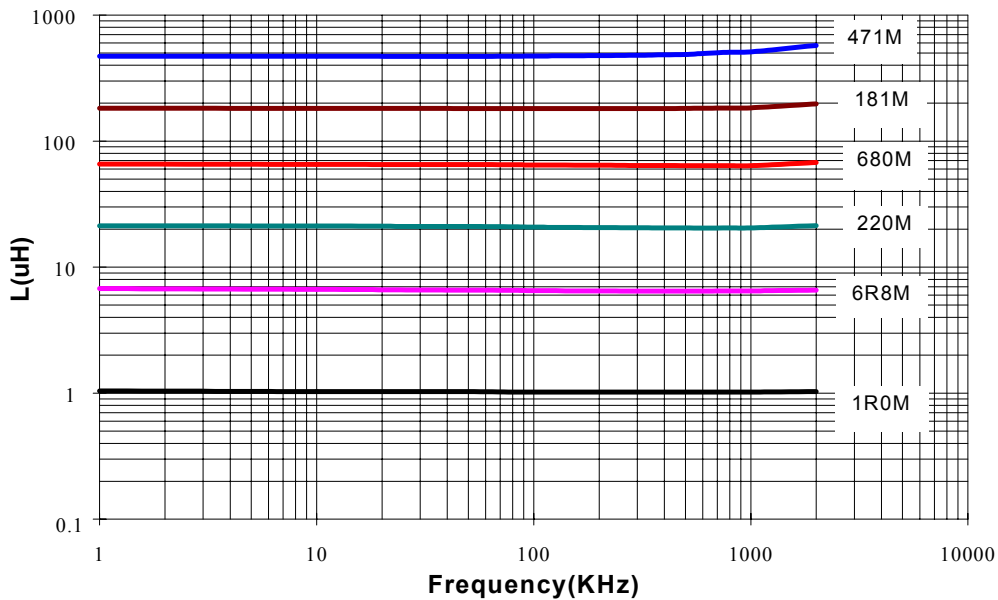
Frontier Electronics Corp.

667 E. COCHRAN STREET, SIMI VALLEY, CA 93065
TEL: (805) 522-9998 FAX: (805) 522-9989
E-mail: frontiersales@frontierusa.com
Web: frontierusa.com

SMD Power Choke—CSN075F series

D. Characteristic curve:

1. L vs. Frequency:



2. Typical L vs. DC Current:

