



Frontier Electronics Corp.

667 E. COCHRAN STREET, SIMI VALLEY, CA 93065

TEL: (805) 522-9998 FAX: (805) 522-9989

E-mail: frontiersales@frontierusa.com

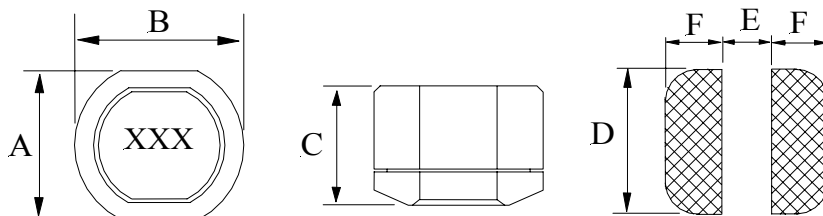
Web: frontierusa.com

SMD Power Choke—CSS054D series

A. Electrical specifications:

Part No.	Mark	L (uH)	Test Freq.	DCR (max) Ω	I rms. (A)
CSS054D-100M	100	10	100 KHz	0.07	1.65
CSS054D-120M	120	12	100 KHz	0.07	1.57
CSS054D-150M	150	15	100 KHz	0.08	1.39
CSS054D-180M	180	18	100 KHz	0.10	1.29
CSS054D-220M	220	22	100 KHz	0.13	1.12
CSS054D-270M	270	27	100 KHz	0.16	1.06
CSS054D-330L	330	33	100 KHz	0.18	0.97
CSS054D-390L	390	39	100 KHz	0.18	0.91
CSS054D-470L	470	47	100 KHz	0.27	0.80
CSS054D-560L	560	56	100 KHz	0.29	0.76
CSS054D-680L	680	68	100 KHz	0.33	0.68
CSS054D-820L	820	82	100 KHz	0.43	0.62
CSS054D-101K	101	100	10 KHz	0.49	0.55
CSS054D-121K	121	120	10 KHz	0.68	0.49
CSS054D-151K	151	150	10 KHz	0.94	0.44
CSS054D-181K	181	180	10 KHz	1.00	0.40
CSS054D-221K	221	220	10 KHz	1.18	0.36
CSS054D-271K	271	270	10 KHz	1.30	0.33

B. Mechanical dimensions: (Unit: mm)



Type 2: Shielded

SERIES #	A	B	C	D	E	F	Type
CSS054D	7.0±0.35	7.8±0.35	4.5±0.4	7.5	2.0	4.0	2

C. Features:

- Tolerance: M: $\pm 20\%$, L: $\pm 15\%$, K: $\pm 10\%$.
- Operating temperature: -25°C TO $+85^{\circ}\text{C}$.
- Inductance measured using the HP4284A LCR meter.
- DCR measured using the 502BC milli-ohm meter.
- Inductance drops no more than 10% at rated current applied or temperature rises $\Delta t < 40^{\circ}\text{C}$.
- Inductance range: CSS054D-series From 10uH(1.65A) to 270uH(0.33A).

★ Custom specifications are available.

Note: **RoHS** compliant; for the **ROHS** parts, we add “-LFR” at the end of the P/N.



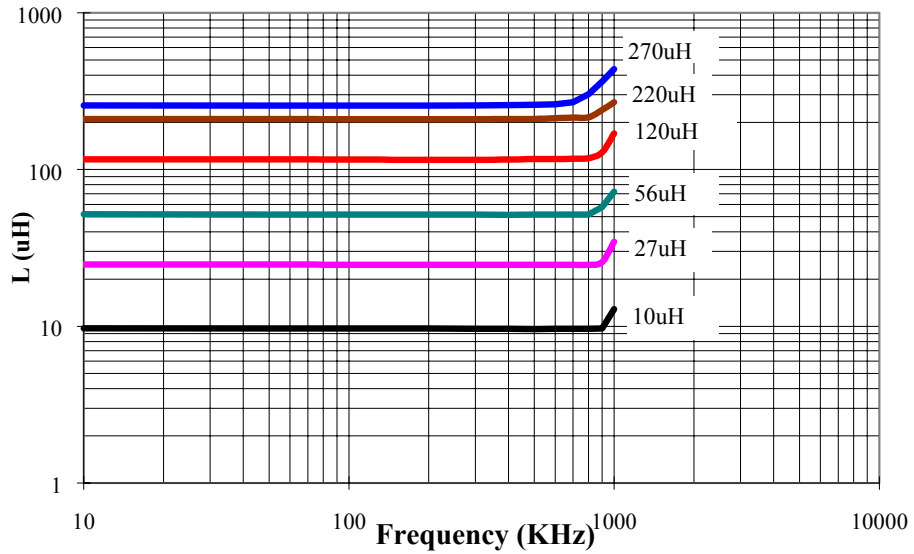
Frontier Electronics Corp.

667 E. COCHRAN STREET, SIMI VALLEY, CA 93065
TEL: (805) 522-9998 FAX: (805) 522-9989
E-mail: frontiersales@frontierusa.com
Web: frontierusa.com

SMD Power Choke—CSS054D series

D. Characteristic curve:

1. L vs. Frequency:



2. L vs. Current:

