



Frontier Electronics Corp.

667 E. COCHRAN STREET, SIMI VALLEY, CA 93065

TEL: (805) 522-9998 FAX: (805) 522-9989

E-mail: frontiersales@frontierusa.com

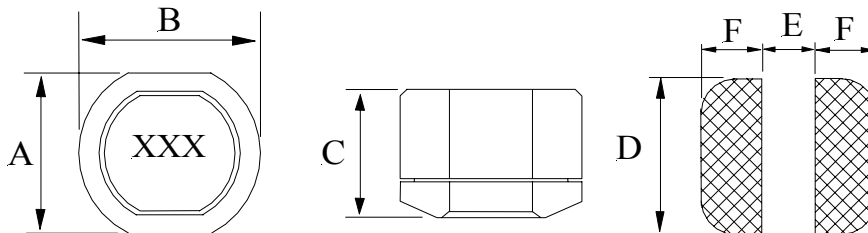
Web: frontierusa.com

SMD Power Choke—CSS063D series

A. Electrical specifications:

Part No.	Mark	L (uH)	Test Freq.	DCR (max) Ω	I rms. (A)
CSS063D-100M	100	10	100KHz	0.14	1.00
CSS063D-120M	120	12	100KHz	0.16	0.94
CSS063D-150M	150	15	100KHz	0.18	0.86
CSS063D-180M	180	18	100KHz	0.25	0.78
CSS063D-220M	220	22	100KHz	0.32	0.76
CSS063D-270M	270	27	100KHz	0.36	0.64
CSS063D-330L	330	33	100KHz	0.41	0.61
CSS063D-390L	390	39	100KHz	0.47	0.53
CSS063D-470L	470	47	100KHz	0.51	0.50
CSS063D-560L	560	56	100KHz	0.72	0.46
CSS063D-680L	680	68	100KHz	0.82	0.42

B. Mechanical dimensions: (Unit: mm)



Type 2: Shielded

SERIES #	A	B	C	D	E	F	Type
CSS063D	5.6±0.3	6.2±0.3	3.3(Max.)	5.5	1.7	2.25	2

C. Features:

- Tolerance: M: ± 20%, L: ± 15%, K: ±10%.
- Operating temperature: -25°C TO +85°C.
- Inductance measured using the HP4284A LCR meter.
- DCR measured using the 502BC milli-ohm meter.
- Inductance drops no more than 10% at rated current applied or temperature rises $\Delta t < 40^\circ\text{C}$.
- Inductance and current range:
CSS063D-series: From 10uH(1.00A) to 68uH(0.42A).

★ Custom specifications are available.

Note: **RoHS** compliant; for the **ROHS** parts, we add “-LFR” at the end of the P/N.



Frontier Electronics Corp.

667 E. COCHRAN STREET, SIMI VALLEY, CA 93065

TEL: (805) 522-9998 FAX: (805) 522-9989

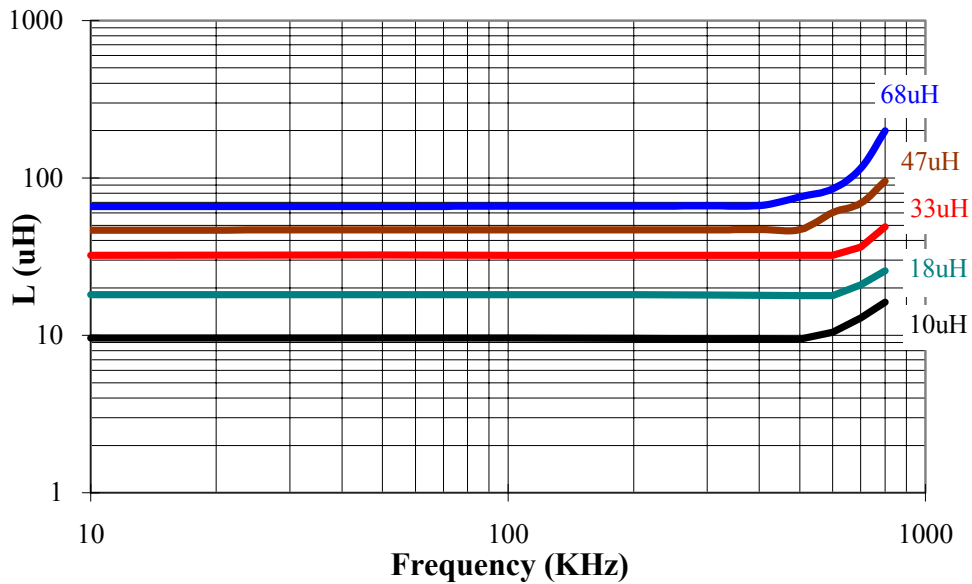
E-mail: frontiersales@frontierusa.com

Web: frontierusa.com

SMD Power Choke—CSS063D series

D. Characteristic curve:

1. L vs. Frequency:



2. L vs. Current:

