



Frontier Electronics Corp.

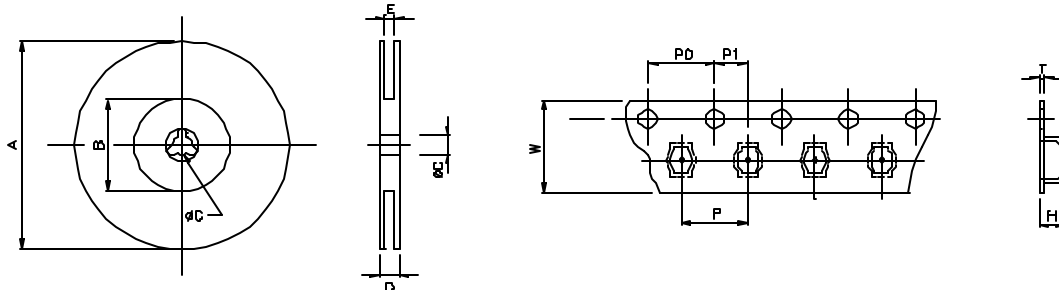
685 E. COCHRAN STREET, SIMI VALLEY, CA 93065

TEL: (805) 522-9998 FAX: (805) 522-9989

E-mail: frontiersales@frontierusa.com

Web: frontierusa.com

Tape and Reel Specifications



Series P/N	Reel dimensions (mm)					Tape dimensions (mm)						Parts per reel		Quantity per	
	A	B	C	D	E	W	P	P0	P1	H	T	7"	13"	Box	Carton

SMD RF Multi-layer Chip Beads

100505 (0402)	178	75	13	12.5	10	8	2	4	2	0.8	0.23	10,000	---		500,000
160808 (0603)	178	75	13	12.5	10	8	4	4	2	1.05	0.23	4,000	---		200,000
201209 (0805)	178	75	13	12.5	10	8	4	4	2	1.04	0.23	4,000	---		200,000
321611 (1206)	178	75	13	12.5	10	8	4	4	2	1.27	0.23	3,000	---		150,000
321616 (1206)	178	75	13	12.5	10	8	4	4	2	1.78	0.23	2,000	---		100,000
322513 (1210)	178	75	13	12.5	10	8	4	4	2	1.43	0.23	2,000	---		100,000
451616 (1806)	178	75	13	16.5	14	12	4	4	2	1.93	0.23	2,000	---		80,000
453215 (1812)	178	75	13	16.5	14	12	8	4	2	1.83	0.23	1,000	---		40,000

SMD RF Multi-layer Chip Inductors

TF100505 (0402)	178	75	13	12.5	10	8	2	4	2	0.8	0.23	10,000	---		500,000
TF160808 (0603)	178	75	13	12.5	10	8	4	4	2	1.05	0.23	4,000	---		200,000
FL160808 (0603)	178	75	13	12.5	10	8	4	4	2	1.05	0.23	4,000	---		200,000
TF201209 (0805)	178	75	13	12.5	10	8	4	4	2	1.04	0.23	4,000	---		200,000
TF201212 (0805)	178	75	13	12.5	10	8	4	4	2	1.60	0.23	2,000	---		100,000
FL201209 (0805)	178	75	13	12.5	10	8	4	4	2	1.04	0.23	4,000	---		200,000
FL201212 (0805)	178	75	13	12.5	10	8	4	4	2	1.60	0.23	2,000	---		100,000
FL321611 (1206)	178	75	13	12.5	10	8	4	4	2	1.27	0.23	3,000	---		150,000
FL321616 (1206)	178	75	13	12.5	10	8	4	4	2	1.78	0.23	2,000	---		100,000

SMD RF Chip Inductors

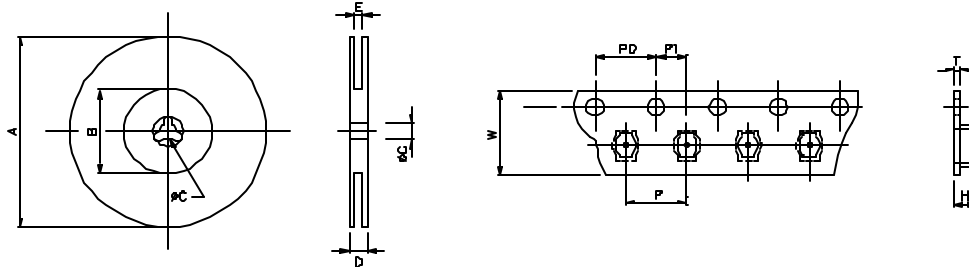
0603C	178	50	13	12.5	8.4	8	4	4	2	1.04	0.22	4,000	---	20,000	120,000
0805C	178	50	13	12.5	8.4	8	4	4	2	1.70	0.25	3,000	---	15,000	90,000
1008C	178	50	13	12.5	8.4	8	4	4	2	2.52	0.25	2,000	---	10,000	60,000
1008F	178	50	13	12.5	8.4	8	4	4	2	2.52	0.25	2,000	---	10,000	60,000
CF322522	178	50	13	12.5	8.4	8	4	4	2	2.52	0.25	2,000	---	10,000	60,000
CF453232	178	50	13	16.5	12.5	12	8	4	2	3.50	0.35	500	---	2,000	12,000



Frontier Electronics Corp.

685 E. COCHRAN STREET, SIMI VALLEY, CA 93065
 TEL: (805) 522-9998 FAX: (805) 522-9989
 E-mail: frontiersales@frontierusa.com
 Web: frontierusa.com

Tape and Reel Specifications



Series P/N	Reel dimensions (mm)					Tape dimensions (mm)						Parts per reel		Quantity per	
	A	B	C	D	E	W	P	P0	P1	H	T	7"	13"	Box	Carton

SMD Air Coil

291A	178	50	13	16.5	12.5	12	8	4	2	3.56	0.25	500	---	2,000	12,000
291B	178	50	13	21.5	16.5	16	8	4	2	3.58	0.25	500	---	1,500	9,000
292A	178	50	13	12.5	8.4	8	8	4	2	1.70	0.30	1,000	---	5,000	30,000
292B	178	50	13	16.5	12.5	12	8	4	2	1.95	0.35	1,000	---	3,000	18,000
293A	340	100	13	21.5	16.5	16	12	4	2	4.40	0.30	---	1,000	1,000	10,000
294A	340	100	13	29.5	24.5	24	12	4	2	6.25	0.35	---	1,000	1,000	8,000

SMD Power Choke

CSN054B	340	100	13	29.5	24.5	24	12	4	2	5.80	0.36	---	1,000	1,000	8,000
CSN075B	340	100	13	29.5	24.5	24	12	4	2	6.00	0.36	---	800	800	6,400
CSN105B	340	100	13	29.5	24.5	24	16	4	2	6.00	0.36	---	600	600	4,800
CSS054B	340	100	13	29.5	24.5	24	12	4	2	6.00	0.36	---	800	800	6,400
CSS075B	340	100	13	29.5	24.5	24	16	4	2	6.00	0.36	---	600	600	4,800
CSS105B	340	100	13	29.5	24.5	24	20	4	2	6.00	0.36	---	500	500	4,000
CSN043D	340	100	13	16.5	12.5	12	8	4	2	3.40	0.35	---	2,800	5,600	16,800
CSN054D	340	100	13	21.5	16.5	16	12	4	2	5.00	0.30	---	1,200	2,400	7,200
CSN073D	340	100	13	21.5	16.5	16	12	4	2	4.15	0.35	---	1,400	2,800	8,400
CSN075D	340	100	13	21.5	16.5	16	12	4	2	5.80	0.30	---	1,000	2,000	6,000
CSN104D	340	100	13	29.5	24.5	24	12	4	2	4.80	0.30	---	1,200	1,200	4,800
CSN105D	340	100	13	29.5	24.5	24	16	4	2	6.40	0.30	---	700	700	2,800
CSS054D	340	100	13	29.5	24.5	24	12	4	2	6.00	0.36	---	800	800	6,400
CSS063D	340	100	13	21.5	16.5	16	12	4	2	5.00	0.30	---	1,200	2,400	7,200
CSS075D	340	100	13	29.5	24.5	24	16	4	2	6.40	0.30	---	700	700	2,800
CSS105D	340	100	13	29.5	24.5	24	16	4	2	6.00	0.36	---	500	500	4,000
CSN042A	178	50	13	21.5	16.5	16	8	4	2	2.00	0.30	1,000	---	3,000	6,000
CSN042C	340	100	13	21.5	16.5	16	8	4	2	3.70	0.30	---	2,500	5,000	15,000
CSS042C	340	100	13	20.5	16.5	16	8	4	2	3.70	0.30	---	2,500	5,000	15,000
CST042C	340	100	13	20.5	16.5	16	8	4	2	3.70	0.30	---	2,500	5,000	15,000
CSN0810S	340	100	13	37.5	32.5	32	20	4	2	11.3	0.40	---	250	250	2,000
CSN082S	340	100	13	29.5	24.5	24	16	4	2	4.15	0.30	---	1,000	1,000	4,000
CSN084S	340	100	13	29.5	24.5	24	16	4	2	6.25	0.35	---	500	500	4,000
CSH084S	340	100	13	29.5	24.5	24	16	4	2	6.60	0.35	---	700	700	5,600
CSS084S	340	100	13	29.5	24.5	24	16	4	2	6.60	0.35	---	500	500	4,000
CST084S	340	100	13	29.5	24.5	24	16	4	2	6.60	0.35	---	500	500	4,000
CSN136S	340	100	13	37.5	32.5	32	24	4	2	8.50	0.35	---	350	350	2,800
CSH136S	340	100	13	38.4	32.5	32	20	4	2	7.60	0.35	---	450	450	3,600
CSS136S	340	100	13	37.5	32.5	32	24	4	2	8.50	0.35	---	350	350	2,800
CSS125P	340	100	13	29.5	24.5	24	16	4	2	5.55	0.35	---	500	500	4,000
CSS127P	340	100	13	29.5	24.5	24	16	4	2	7.85	0.35	---	500	500	4,000
CSN073F	340	100	13	21.5	16.5	16	12	4	2	4.00	0.30	---	1,600	3,200	9,600
CSN075F	340	100	13	21.5	16.5	16	12	4	2	5.85	0.30	---	1,100	2,200	6,600

SMT Transformer

SMTxxx-1A/-1MA	340	60	13	30.4	25.5	24	16	4	2	5.41	0.37	---	800	800	8,000
SMTxxx-2A/-2MA	340	60	13	30.4	25.5	24	20	4	2	6.76	0.37	---	500	500	5,000